



Pollinator Garden in Pink, Purple & Blue  
view from the street

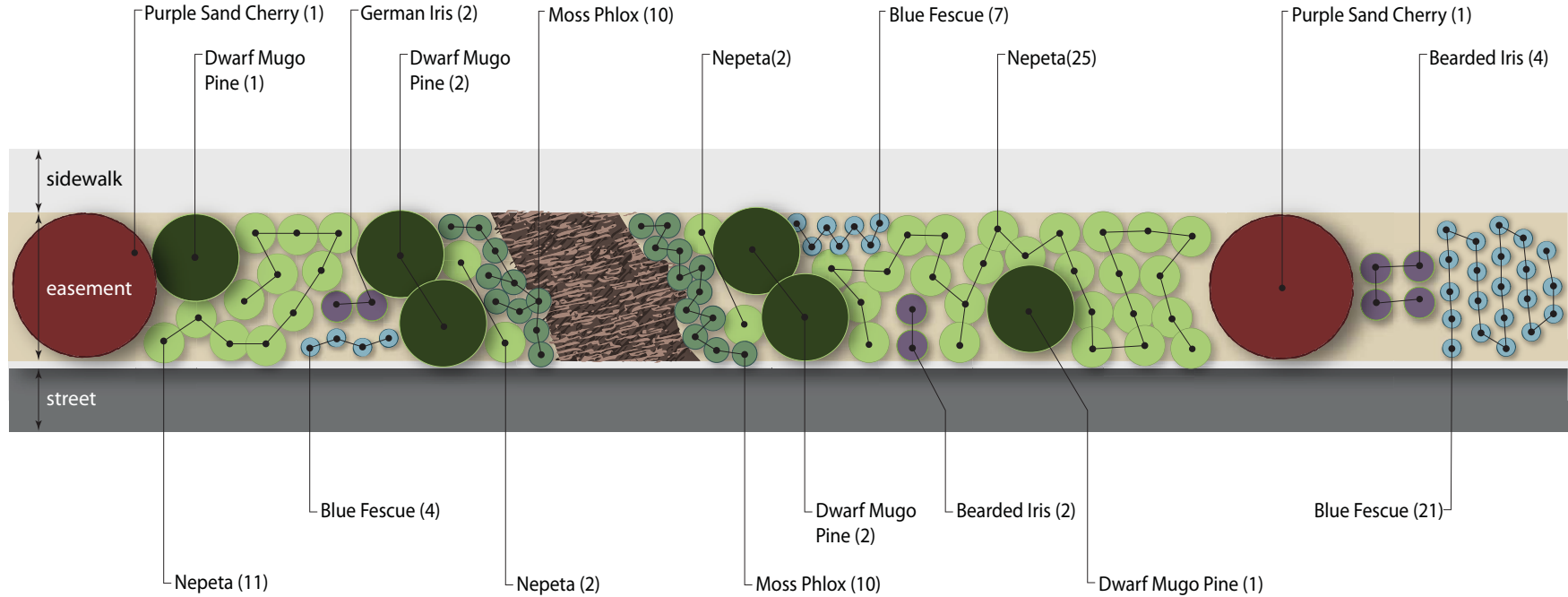


planting plan

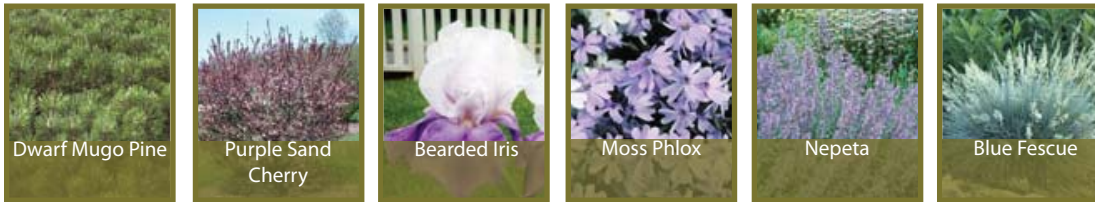




planting diagram



included plants



plant list

| Type               | Common Name        | Latin Name                | How Many | Size & Condition        | Remarks    | Salt Tolerant | Aesthetic Tolerant   | Ecological Traits |
|--------------------|--------------------|---------------------------|----------|-------------------------|------------|---------------|--|-------------------|
| Shrubs             | Dwarf Mugo Pine    | <i>Pinus mugo</i>         | 6        | 3 gal.                  | As on plan | Yes           | Evergreen with unique 'candle' spikes                            |                   |
|                    | Purple Sand Cherry | <i>Prunus x cistena</i>   | 2        | 5 gal.                  | As on plan | Yes           | Rich purple foliage, great summer contrast                       |                   |
| Perennials         | Bearded Iris       | <i>Iris germanica</i>     | 8        | 1 gal.                  | As on plan | Yes           | Flowers are spectacular, but brief; great spiked foliage remains |                   |
|                    | Moss Phlox         | <i>Phlox subulata</i>     | 20       | 4" pot                  | 1' o.c.    |               | Evergreen, brief, bright spring flowers                          |                   |
|                    | Nepeta             | <i>Nepeta x faassenii</i> | 40       | 1 gal.                  | 2' o.c.    | Yes           | Violet flowers displayed continuously in summer                  |                   |
| Ornamental Grasses | Blue Fescue        | <i>Festuca glauca</i>     | 32       | 1 qt.                   | 1.5' o.c.  | Yes           | Spikes of blue foilage   |                   |
|                    |                    |                           |          | gal. = gallon container |            |               |  |                   |
|                    |                    |                           |          | qt. = quart container   |            |               |  |                   |