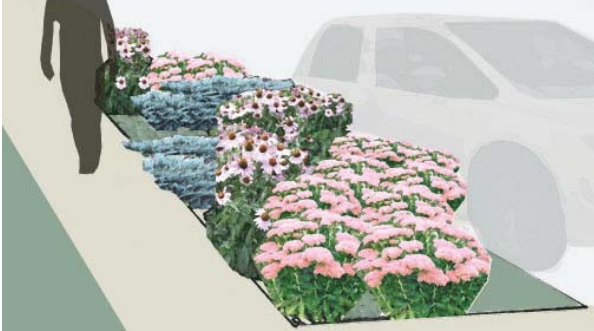
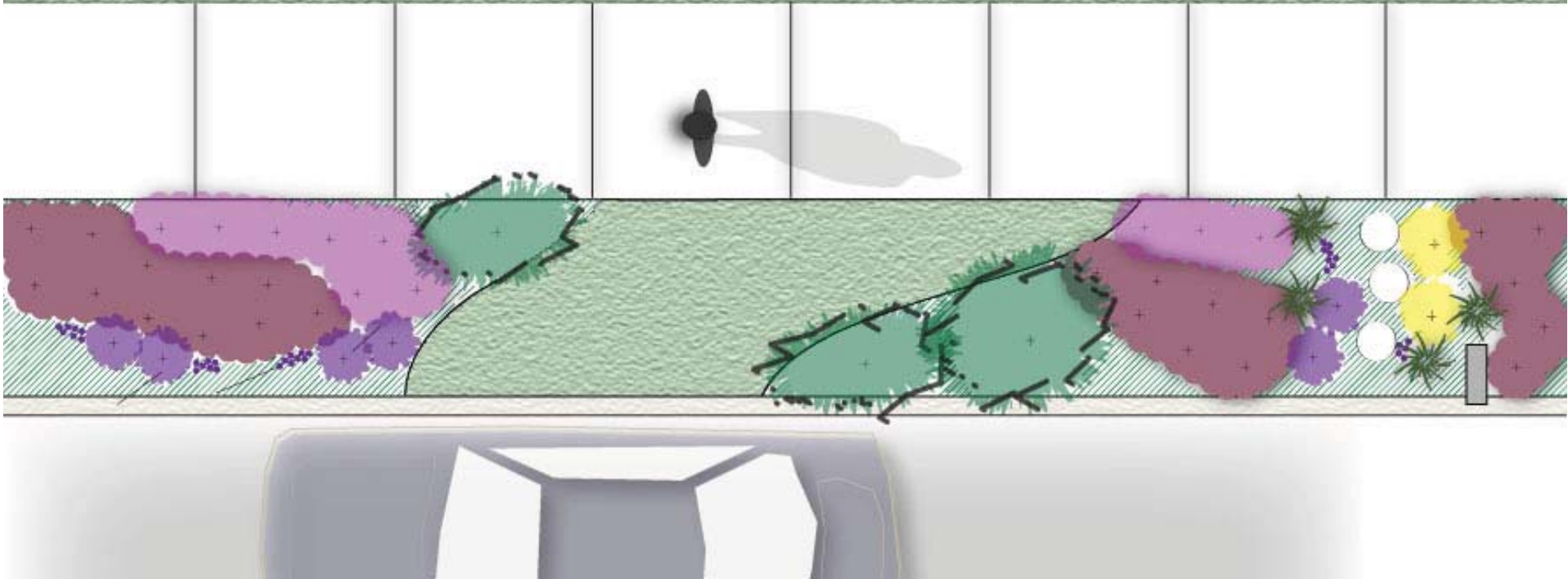




Texture Garden with Winter Appeal 2
view from the sidewalk

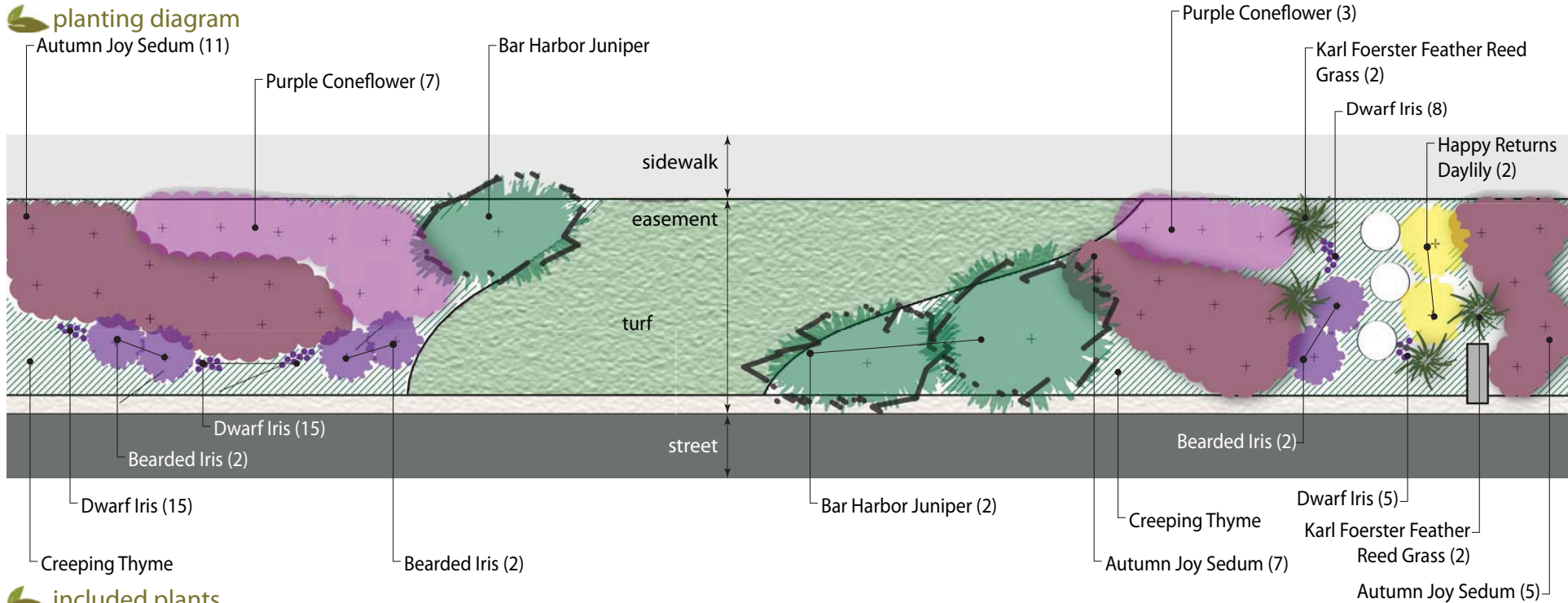


planting plan

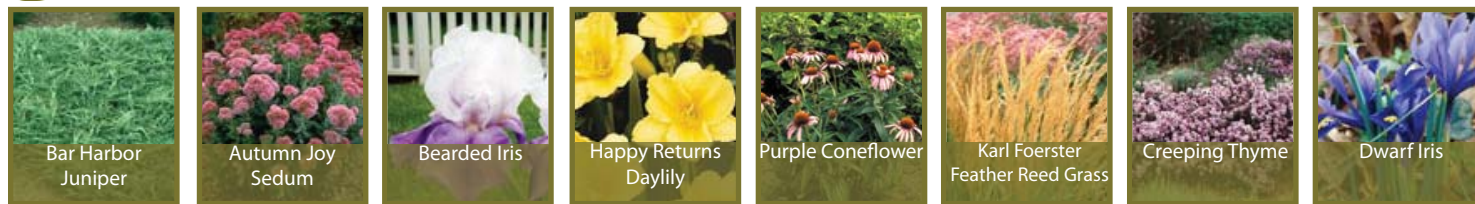




planting diagram



included plants



plant list

Type	Common Name	Latin Name	How Many	Size & Condition	Remarks	Salt Tolerant	Aesthetic Tolerant	Ecological Traits
Shrubs	Bar Harbor Juniper	<i>Juniperus horizontalis</i> 'Bar Harbor'	3	5 gal.	4' o.c.	Yes	Spreading form; Reddish plum in winter	
Perennials	Autumn Joy Sedum	<i>Sedum</i> 'Autumn Joy'	19	2 gal.	1.5' o.c.	Yes	Mauve blooms in late summer	Attracts butterflies
	Bearded Iris	<i>Iris germanica</i>	6	5.5" pots	1.5' o.c.	Yes	Rich mulberry flowers and purple beards	Attracts butterflies & hummingbirds
	Happy Returns Daylily	<i>Hemerocallis</i> 'Happy Returns'	2	1 gal.	2' o.c.	Yes	Yellow bloom in spring and reblooms until frost	Attracts butterflies
Ornamental Grasses	Purple Coneflower	<i>Echinacea purpurea</i>	14	2 gal.	1.5' o.c.	Yes	Provides color through fall	Attracts birds
	Karl Foerster Feather Reed Grass	<i>Calamagrostis x acutiflora</i> 'Karl Foerster'	5	3 gal.	2' o.c.	Yes	Winter form, showy in fall	
Groundcovers	Creeping Thyme	<i>Thymus praecox</i>	106	4" pots	8" o.c.	Yes	White blooms in summer	Attracts bees
Bulbs	Dwarf Iris	<i>Iris reticulata</i>	35	8 cm/up	4" apart in natural groupings	Yes	Early spring deep purple bloom, fragrant	
				BB = balled & burlapped	o.c. = on center spacing			
				gal. = gallon container				