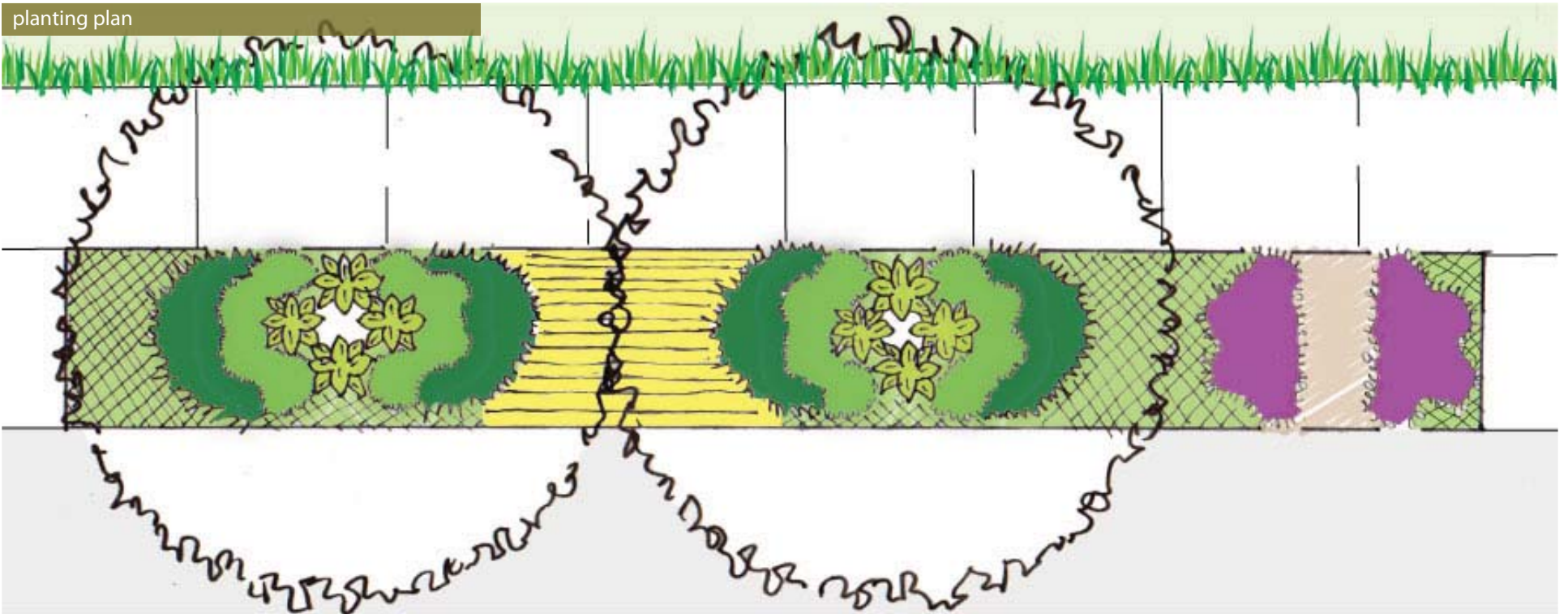




Shade Garden in Purple and Yellow  
view from the street



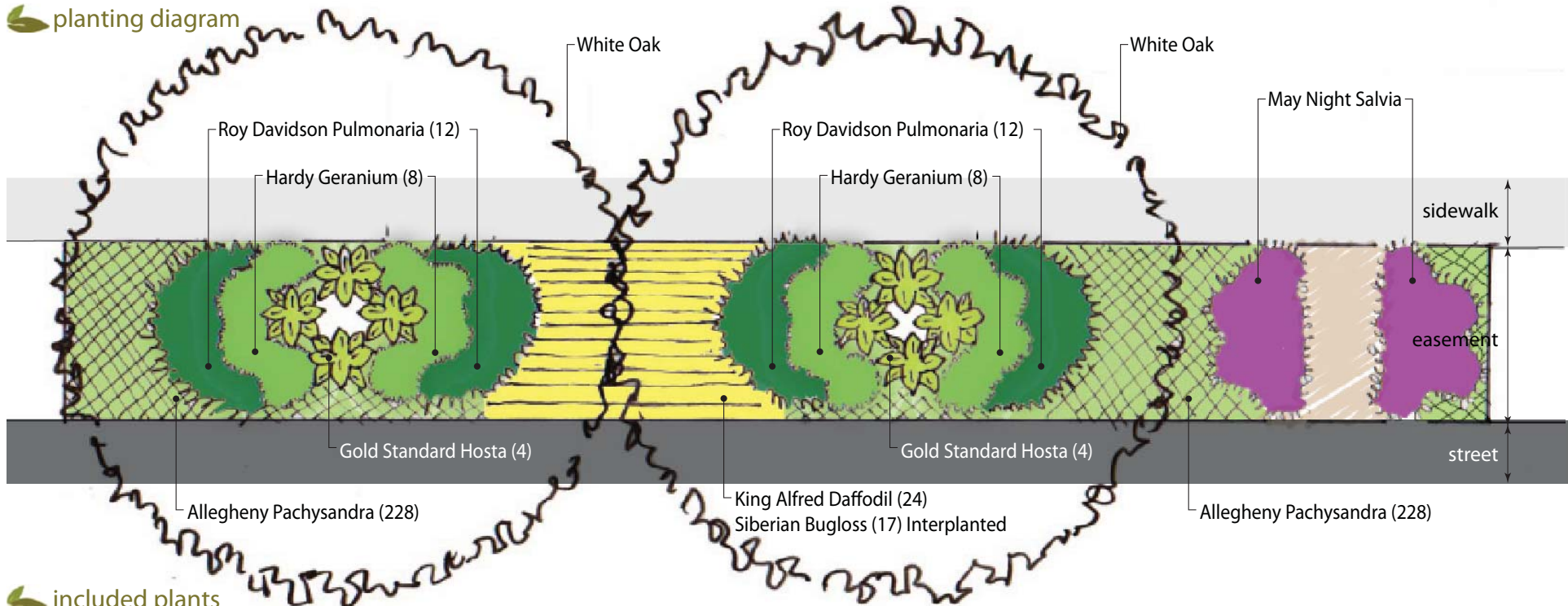
planting plan



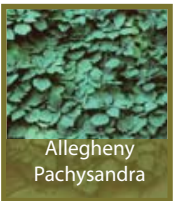
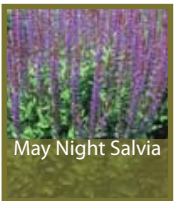
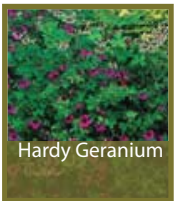
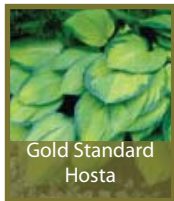
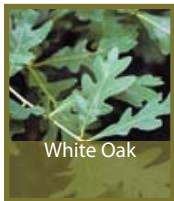




planting diagram



included plants



plant list

Type	Common Name	Latin Name	How Many	Size & Condition	Remarks	Salt Tolerant	Aesthetic Tolerant	Ecological Traits
Trees	White Oak	Quercus alba	2	2" cal.	As on plan	Yes	Crimson fall color; Architectural form	Edible fruit; Food for bird and wildlife; Habitat for birds
Perennials	Gold Standard Hosta	Hosta 'Gold Standard'	8	2 gal.	2" o.c.	Yes	Attractive foliage; Lavender flowers in July to August	Attracts hummingbirds; Supports bees
	Hardy Geranium	Geranium sanguineum	16	2 gal.	18" o.c.	Yes	Magenta flowers late spring through early summer; Dark red fall color	Drought tolerant
	May Night Salvia	Salvia x sylvestris 'Mainacht (May Night)'	10	2 gal.	18" o.c.	Yes	Deep, violet-blue flower spikes in late spring to midsummer	Supports bees
	Roy Davidson Pulmonaria	Pulmonaria 'Roy Davidson'	24	2 gal.	18" o.c.		Attractive foliage; Variegation brightens shady spaces	
	Siberian Bugloss	Brunnera macrophylla	17	1 gal.	12" o.c.	Yes	Sky-blue flowers in mid to late spring	
Groundcover	Allegheny Pachysandra	Pachysandra procumbrens	456	4" pot	8" o.c.	Yes	Dark green color; Attractive foliage	Evergreen
Bulbs	King Alfred Daffodil	Narcissus 'King Alfred'	24	hardy bulb	6" o.c.	Yes	Attractive form; Bright yellow blooms in early spring	
				BB = balled & burlapped	o.c. = on center spacing			
				gal. = gallon container				
				cal. = gallon container				