



Garden with Year Round Color and Form  
view from the street

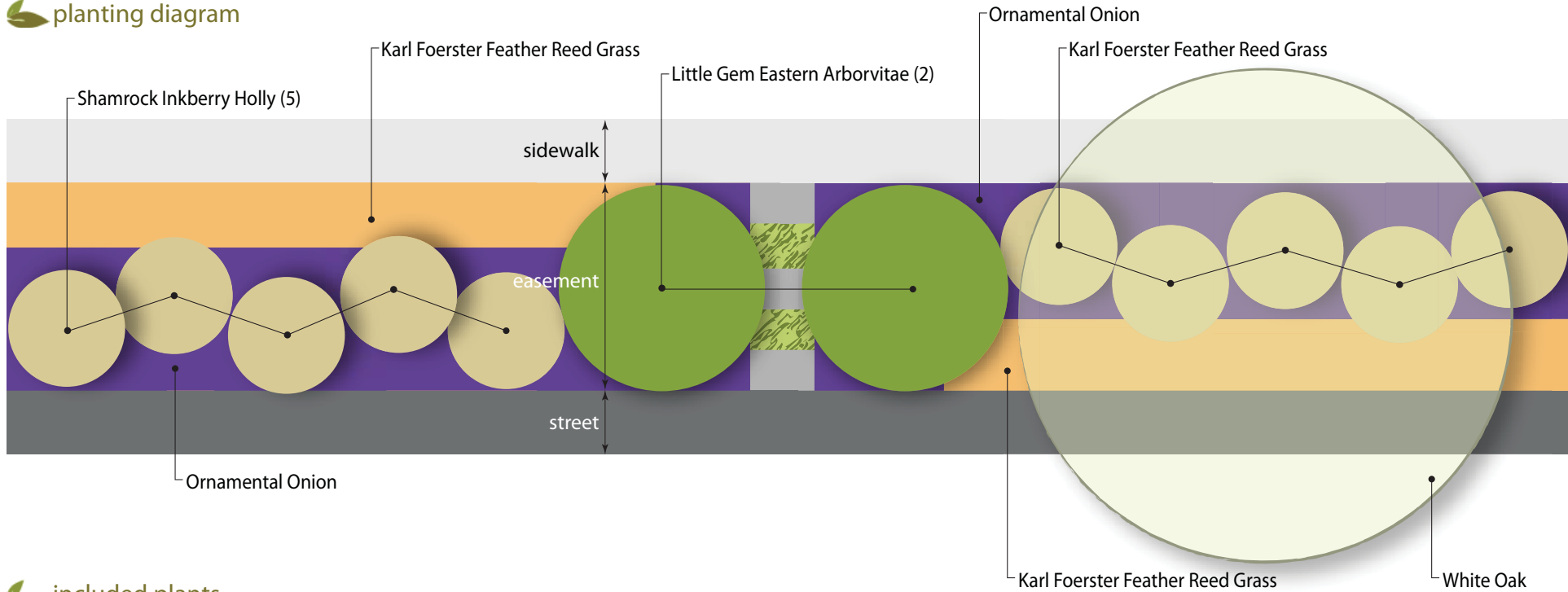


planting plan

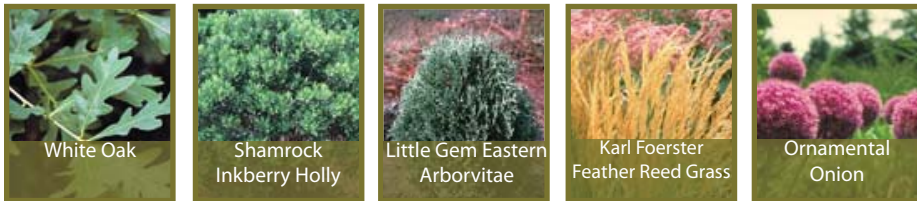




planting diagram



included plants



plant list

Type	Common Name	Latin Name	How Many	Size & Condition	Remarks	Salt Tolerant	Aesthetic Tolerant	Ecological Traits
Trees	White Oak	Quercus alba	1	2" cal.	As on plan	Yes	Crimson fall color; Architectural form	Edible fruit; Food for bird and wildlife; Habitat for birds
Shrubs	Shamrock Inkberry Holly	Ilex glabra 'Shamrock'	10	3 gal.	3' o.c.	Yes	Evergreen; Winter interest; Black/Purple berries	Provides food and habitat for wildlife; Tolerates some drought & flooding
	Little Gem Eastern Arborvitae	Thuja occidentalis 'Little Gem'	2	3 gal.	17" o.c. from left and right easement edge	Yes	Evergreen; Winter interest	Food for birds and wildlife; Habitat for birds
Ornamental Grasses	Karl Foerster Feather Reed Grass	Calamagrostis x acutiflora 'Karl Foerster'	16	2 gal.	2' o.c.	Yes	Broze, purple-tinged flowers in early summer; Golden wheat color in fall; Architectural form; Winter interest	
Bulbs	Ornamental Onion	Allium afiatunense	20 s.f.	large bulbs		Yes	Lilac-purple flowers late spring to early summer; Distinctive spherical head; Good cut flowers	
				BB = balled & burlapped	o.c. = on center spacing			
				gal. = gallon container				
				cal. = gallon container				